



Materials:

- Size 4 circular needle with a 40 inch cord
- Size 9 circular needle with a 40 inch cord
- Seasonings Series from The Loopy Ewe (430 yards of a main color and 100 yards of a contrasting color). Color shown is Silver Lining.
- Gauge: 22 stitches knit flat in stockinette stitch equals 4 inches
- Finished Size: 60 inches long by 19 inches deep

Note: I cut the yarns when switching colors in this shawl, so that I could maintain a stretchy edge for blocking.

Using the smaller needles and the main color, cast on 4 stitches

Row 1 (RS): K1, Kf&b, Kf&b, K1 (6 stitches)

Row 2 (WS): K2, HHI twice, P2, yo, K2.

The shawl body:

Row 3: K2, HHI twice, K until 2 stitches remain, yo, K2.

Row 4: K2, HHI twice, P until 2 stitches remain, yo, K2.

Repeat rows 3 and 4 until you have completed 42 total rows (this should have you ending on a wrong side with 129 total stitches on the needle).

lala
-knits-

Switch to larger needles and the contrast color yarn, repeat rows 3 and 4 twice (you have now worked 46 total rows).

Switch to the smaller needles and the main color and continue repeating rows 3 and 4 until 88 total rows are complete and your stitch count is 267 stitches.

Lace Panel:

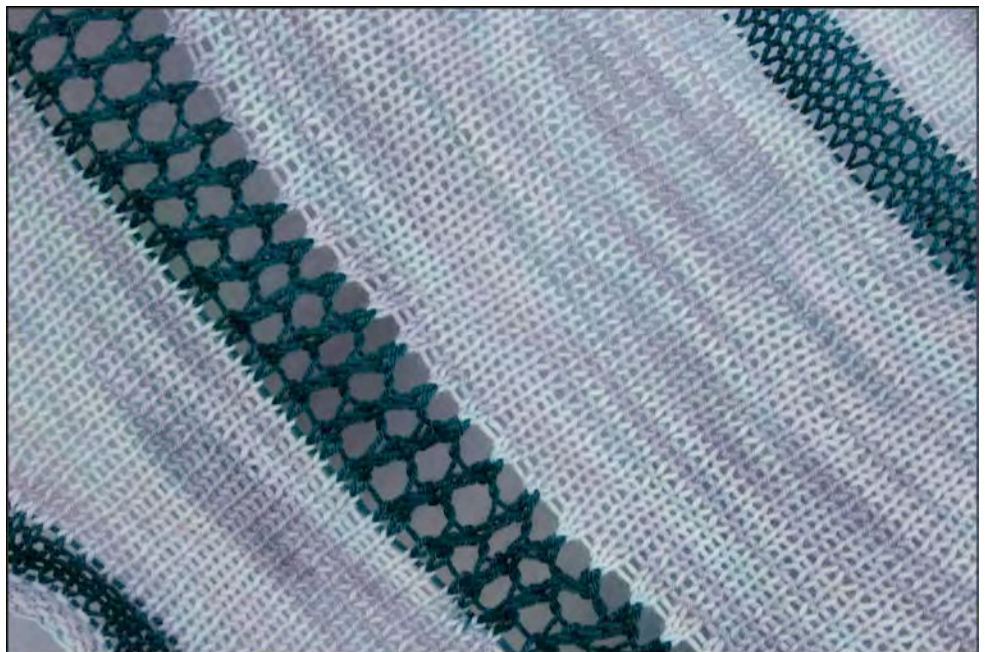
Using larger needles and cc complete a lace panel as follows

Row 89: K2, HHI twice, *k2tog, yo; repeat until 3 stitches remain, K1, yo, K2.

Rows 90, 92, 94: K2, HHI twice, purl until 2 stitches remain, yo, K2.

Row 91: K2, HHI twice, *k2tog, yo; repeat until 3 stitches remain, K1, yo, K2.

Rw 93: K2, HHI twice, *k2tog, yo; repeat until 3 stitches remain, K1, yo, k2.



lala
-knits-

Switch back to the smaller needles and main color and repeat rows 3 and 4 from the shawl body until you have a total of 116 rows with 351 stitches on the needles.

Switch to larger needles and the contrast color yarn, repeat rows 3 and 4 twice (you have now worked 120 total rows).

Switch back to the smaller needles and main color and repeat row 3 (the knit row) from the main body 6 times. You now have 381 stitches on the needles. Bind off using your favorite stretchy method. Weave in all ends and block into a semi circle.

Abbreviations Used:

HHI: Half hitch increase Wrap yarn on thumb or finger as for a half hitch/
backward loop cast on

K:Knit

K2tog: decrease one stitch by knitting 2 stitches together

K3tog: Decrease 2 stitches by knitting 3 stitches together

P: Purl

yo: Yarn over, created by wrapping the yarn around the needle once

